



**Beaufort County Public Works**  
**Stormwater Infrastructure**  
 Project Summary

**Project Summary:** Port Royal Island Valley Drains- Murray Drive, Blackburn Pierce Drive, Harold Drive

**Activity:** Routine/Preventive Maintenance

**Duration:** 07/31/19 - 08/08/19

**Narrative Description of Project:**

Project improved 12,240 L.F. of drainage system. Cleaned out 12,240 L.F. of valley drains. This project consisted of the following area: Blackburn Pierce Drive (1,530 L.F.), Murray Drive (7, 810 L.F.) and Harold Drive (2,900 L.F.)

<b>2020-314 / Port Royal Island Valley Drains</b>	<b>Labor Hours</b>	<b>Labor Cost</b>	<b>Equipment Cost</b>	<b>Material Cost</b>	<b>Contractor Cost</b>	<b>Indirect Labor</b>	<b>Total Cost</b>
AUDIT / Audit Project	1.0	\$21.79	\$0.00	\$0.00	\$0.00	\$0.00	\$21.79
COVD / Cleaned Out Valley Drains	92.0	\$2,432.71	\$228.06	\$163.32	\$0.00	\$613.41	\$3,437.50
HAUL / Hauling	18.0	\$400.86	\$254.88	\$47.88	\$0.00	\$259.56	\$963.18
2020-314 / Port Royal Island Valley Drains Project Sub	111.0	\$2,855.36	\$482.94	\$211.20	\$0.00	\$872.97	\$4,422.47
<b>Grand Total</b>	<b>111.0</b>	<b>\$2,855.36</b>	<b>\$482.94</b>	<b>\$211.20</b>	<b>\$0.00</b>	<b>\$872.97</b>	<b>\$4,422.47</b>

**Before**



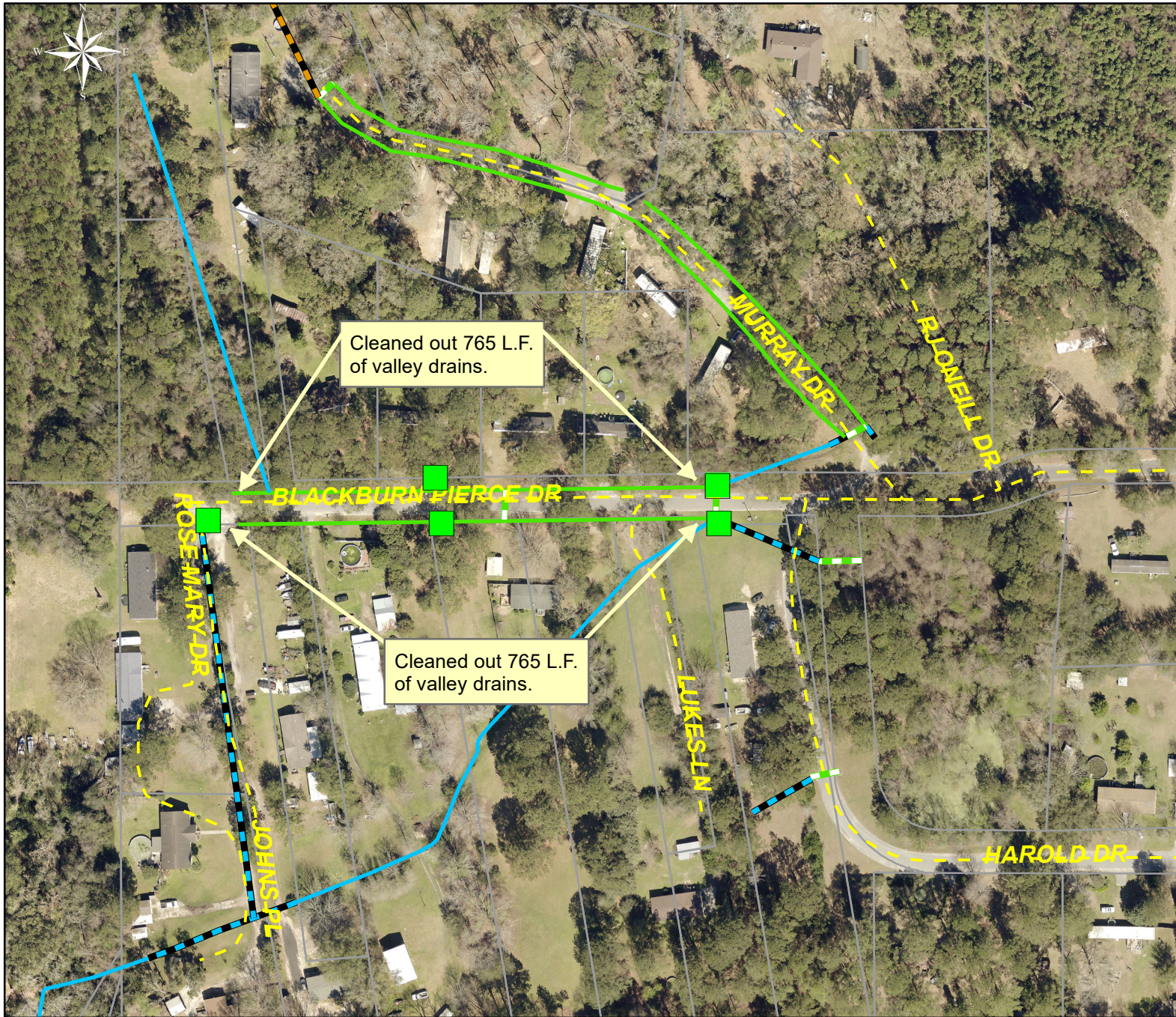
**During**

(No Pictures Available)

**Ending**

(No Pictures Available)





Project: Port Royal Island Valley Drains- Blackburn Pierce Drive Map #1

Activity: Routine/ Preventive Maintenance

Project #: 2020-314

Township/SW Dist: Port Royal Island/6

Completed: August 2019

Legend	
Drainage Type	
	Access Pipe
	Bleeder Pipe
	Channel Pipe
	Channel
	Stream
	Crossline Pipe
	Driveway Pipe
	Lateral
	Lateral Pipe
	River
	Road Pipe
	Roadside
	Roadside Pipe



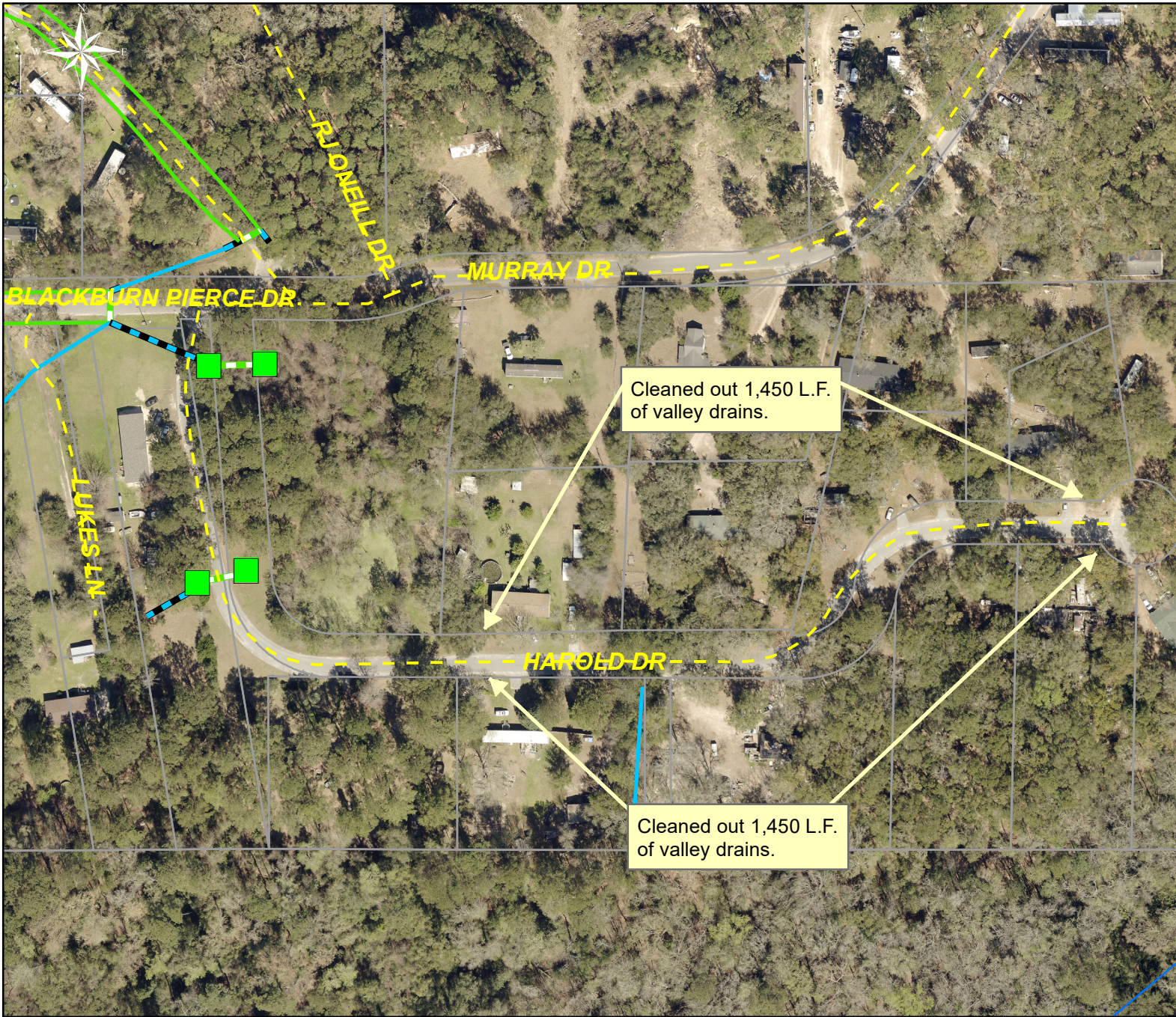
1 inch = 170 feet

Prepared By: BC Stormwater Management Utility

Date Print: 02/16/21

File: C:\project summaries map\Port Royal Island Valley Drains- Blackburn Pierce Dr.Map #1\_2020-314





Project: Port Royal Island Valley Drains- Harold Drive Map #2

Activity: Routine/ Preventive Maintenance














Project #: 2020-314

Township/SW Dist: Port Royal Island/6

Completed: August 2019

**Legend**

**Drainage Type**

-  Access Pipe
-  Bleeder Pipe
-  Channel Pipe
-  Channel
-  Stream
-  Crossline Pipe
-  Driveway Pipe
-  Lateral
-  Lateral Pipe
-  River
-  Road Pipe
-  Roadside
-  Roadside Pipe

0 2550 100 150 200 Feet

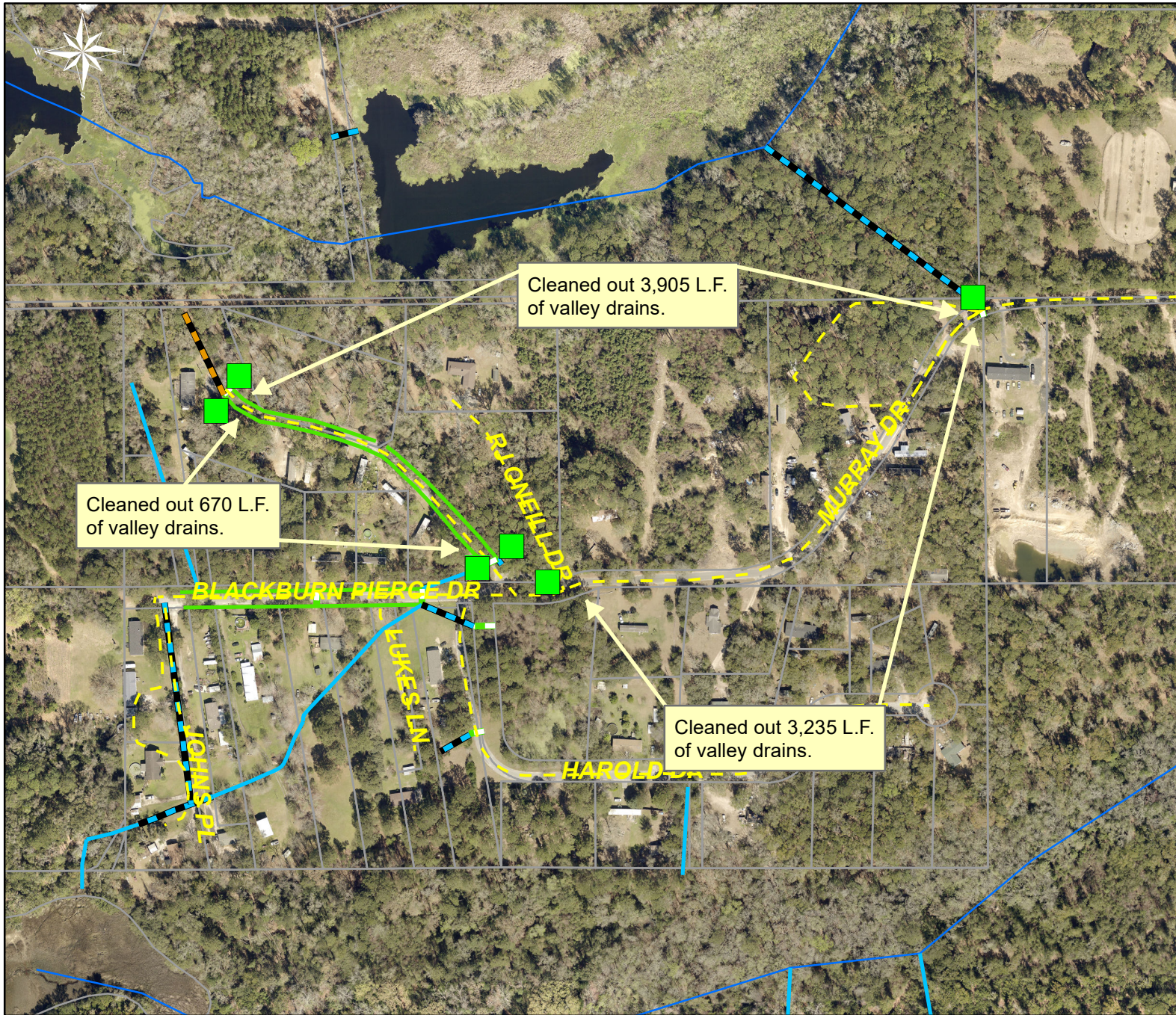
1 inch = 170 feet

Prepared By: BC Stormwater Management Utility

Date Print: 02/16/21

File: C:\project summaries map\Port Royal Island Valley Drains- Harold Drive Map #2\_2020-314





Project: Port Royal Island Valley Drains- Murray Drive Map #3

Activity: Routine/ Preventive Maintenance

Project #: 2020-314

Township/SW Dist: Port Royal Island/6

Completed: August 2019

**Legend**

**Drainage Type**

- Access Pipe
- Bleeder Pipe
- Channel Pipe
- Channel
- Stream
- Crossline Pipe
- Driveway Pipe
- Lateral
- Lateral Pipe
- River
- Road Pipe
- Roadside
- Roadside Pipe

0 60 120 240 360 480 Feet

1 inch = 330 feet

Prepared By: BC Stormwater Management Utility

Date Print: 02/16/21

File: C:\project summaries map\Port Royal Island Valley Drains- Murray Drive Map #3\_2020-314